



GAT MONTHLY MEMBERSHIP PROGRESS REPORT

Results as of: 6/30/2023

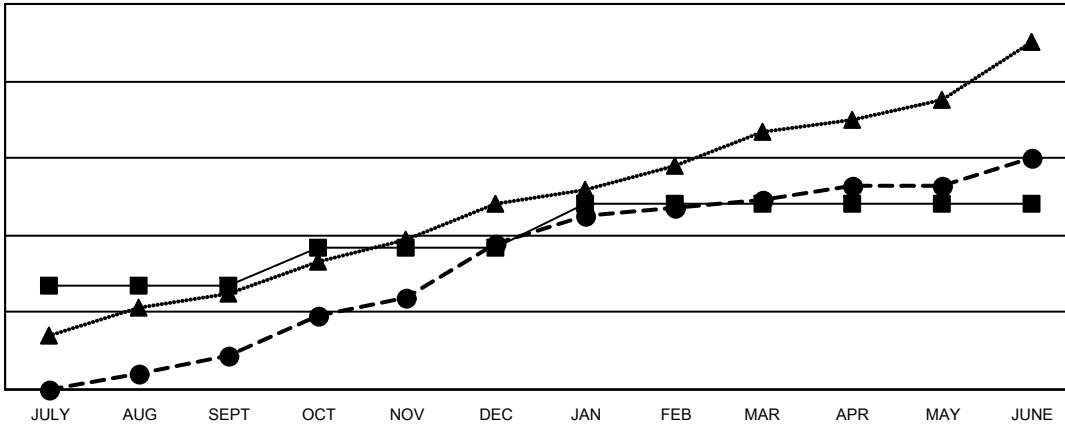
Multiple District 306

LOCATION: REP OF SRI LANKA

Clubs			
RESULTS FOR 2022-2023			
QUARTER	NEW CLUB GOAL	NEW CLUBS	DROPPED CLUBS
JULY/AUG/SEPT	27	9	28
OCT/NOV/DEC	10	29	3
JAN/FEB/MAR	11	11	0
APR/MAY/JUNE	0	11	2

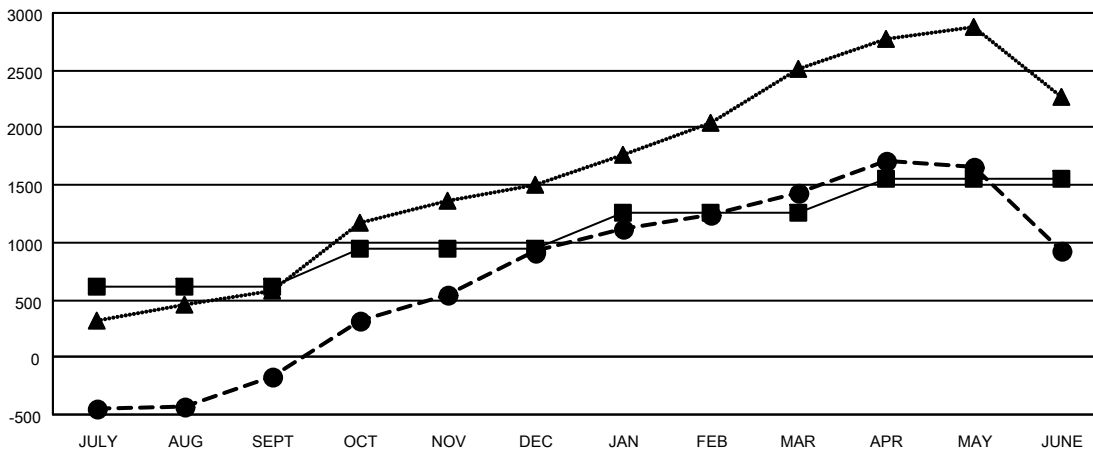
Members			
RESULTS FOR 2022-2023			
QUARTER	MEMBER GROWTH NET GOAL	MEMBER GROWTH ACTUAL	DROPPED MEMBERS ACTUAL (including transfers)
JULY/AUG/SEPT	610	947	1,019
OCT/NOV/DEC	329	2,156	963
JAN/FEB/MAR	324	787	195
APR/MAY/JUNE	290	865	1,289

GOALS AND ACTUAL NEW CLUBS CUMULATIVE



- - CURRENT YEAR GOALS FOR NEW CLUBS
- - CURRENT YEAR ACTUAL NEW CLUBS
- ▲ - LAST YEAR ACTUAL NEW CLUBS

GOALS AND ACTUAL MEMBERS CUMULATIVE



- - MEMBER GROWTH NET GOAL
- - MEMBER GROWTH ACTUAL
- ▲ - LAST YEAR MEMBERSHIP ACTUAL

DROPPED CLUBS: 33	543 CLUBS OF 702 ADDED 1 OR MORE NEW MEMBERS	GENDER DISTRIBUTION
DROPPED MEMBERS	CLICK HERE FOR CUMULATIVE MEMBERSHIP DATA	MALE 13,477 (74.07%)
DECEASED 65		FEMALE 4,716 (25.92%)
CLUB CANCELLED 465		NON BINARY 0 (0.00%)
OTHER 2,940		PREFER NOT TO ANSWER 1 (0.01%)
TOTAL 3,470		TOTAL FAMILY UNIT MEMBERS 7,293
		FAMILY MEMBERS PAYING HALF DUES 4,220